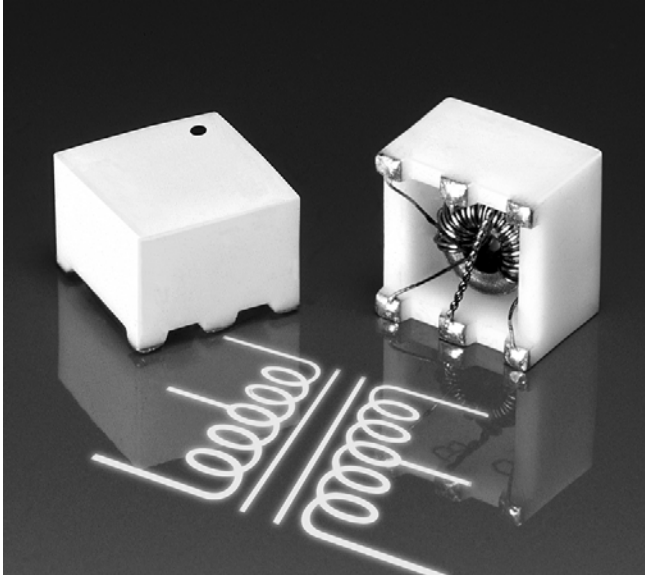


For Analog Devices  
D/A High-Speed  
Converters

# Surface Mount Wideband RF Transformers



These wideband RF transformers provide excellent performance at a very economical price. They come tapped or untapped and are packaged in a low profile, flat top ceramic case that makes them ideal for pick and place operations. They feature 400 V isolation and a 500 mA maximum current rating. Operating temperature range is -40° to +85° C.

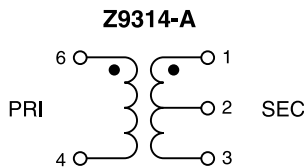
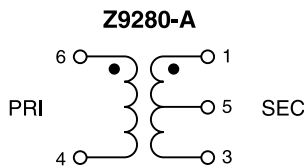
Applications include impedance matching, voltage or current transformation, DC isolation, balanced/unbalanced current mixing, matching, power splitting, coupling and signal inversion.

For free evaluation samples, contact Coilcraft or visit [www.coilcraft.com](http://www.coilcraft.com).

Part number	Impedance ratio pri : sec	3 dB frequency response (MHz)	I <sub>rms</sub> (mA)	Insertion loss typ (dB)	Pins 1-3		Pins 6-4		Color dot
					L min (μH)	DCR max (Ohms)	L min (μH)	DCR max (Ohms)	
Z9280-A	1 : 1	0.250 – 450	250	0.58	13	0.060	11	0.055	Orange
Z9314-A	1 : 6.25	0.350 – 1700	250	1.10	30	0.080	8	0.038	Black

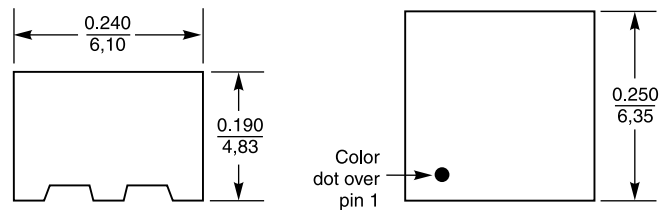
1. Operating temperature range -40°C to +85°C.
2. Electrical specifications at 25°C.

## Schematic

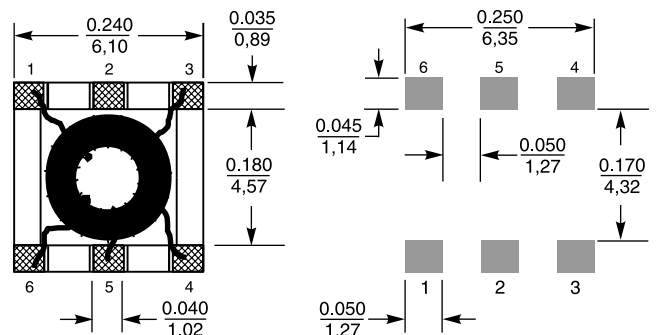


## Dimensions

All dimensions  $\pm 0.005"$   
 $\pm 0.127$  mm



### Recommended Land Pattern



Specifications subject to change without notice.  
Please check our website for latest information.

Document 296 Revised 02/21/05

1102 Silver Lake Road Cary, Illinois 60013 Phone 847/639-6400 Fax 847/639-1169 [www.DataSheet4U.com](http://www.DataSheet4U.com)

E-mail [info@coilcraft.com](mailto:info@coilcraft.com) Web <http://www.coilcraft.com>